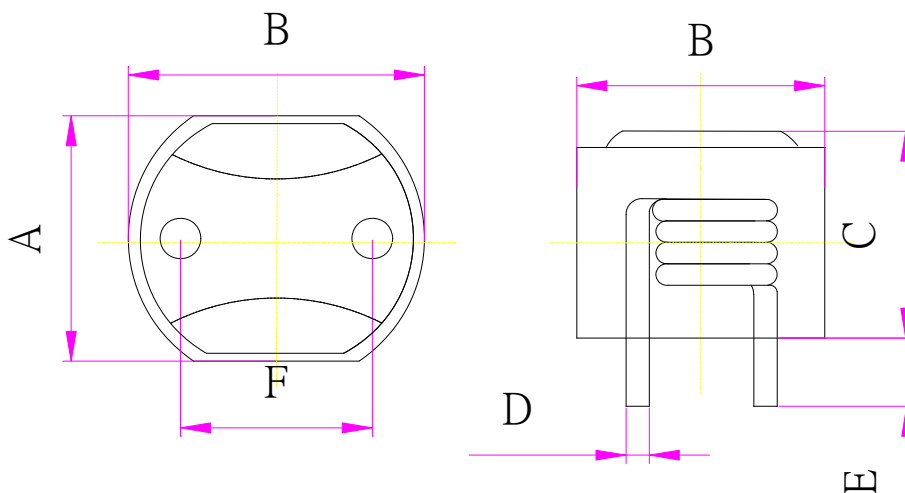


Shape and size: (Dimensions are in mm)


Series	A(max)	B(max)	C(max)	D	E	F
DPI1210	10.2±0.5	12.3±0.5	By each P/N	By each P/N	3.4±0.5	8.0±0.5

Features:

- No air-space, Magnetic powder is full filled inside.
- Low DCR, Lower loss ,
- Low profile package with large Current Design.
- Magnetic shielded construction for high density board assembly.
- Good DC Current characteristics in high frequency and high temperature
- RoHS compliant.

Ordering information:
DPI 1210 - 1R0 M

(1) (2) (3) (4)

- (1) Series : Ultra high current **DIP Power Inductors**
- (2) Style: **1210** is size.
- (3) Inductance: **1R0** for **1.0** uH.
- (4) Inductance tolerance: **M**: ± 20%.

Inductance and rated current:

- DPI1210 0.22~4.7uH 36~10A

Test equipments:

L test by Wayne kerr 3260B LCR meter with

Wyane kerr 3265B Bias Current Source

DCR tested by Milli-ohm meter.

- Electrical specifications at 25°C.

Characteristics:

- **Saturation current (Isat):** The current will cause L_0 to drop approximately 20% typical.
- **Temperature rise current (Irms):** The current will cause the coil temperature rise approximately $\Delta T=40^\circ\text{C}$ without core loss.
- **Operating temperature :** -25 °C to 125 °C .

Applications:

- Desktop, and server applications.
- DC/DC converters in distributed power systems
- VGA Card.

Part No.	Inductance L_0 (uH)	Test Freq. (0.25V)	DCR mOHM		Rated Current (A)Typ.		C mm Max	D mm ± 0.25
			Max. (typ)	typ	I sat	I rms		
DPI1210-R22M	0.22	100 KHz	0.60	0.42	56.0	36.0	7.5	1.6
DPI1210-R33M	0.33	100 KHz	0.80	0.60	48.0	31.0	8.6	1.6
DPI1210-R39M	0.39	100 KHz	0.80	0.60	43.0	31.0	8.6	1.6
DPI1210-R47M	0.47	100 KHz	1.00	0.78	40.0	28.0	10.0	1.6
DPI1210-R56M	0.56	100 KHz	1.00	0.78	38.0	28.0	10.0	1.6
DPI1210-R68M	0.68	100 KHz	1.00	0.78	36.0	28.0	10.0	1.6
DPI1210-R80M	0.80	100 KHz	1.45	1.24	34.0	24.0	10.0	1.5
DPI1210-1R0M	1.00	100 KHz	2.00	1.48	32.0	20.0	10.0	1.3
DPI1210-1R5M	1.50	100 KHz	3.50	2.62	30.0	16.0	10.0	1.1
DPI1210-2R2M	2.20	100 KHz	5.00	3.05	24.0	13.60	10.0	1.1
DPI1210-2R8M	2.80	100 KHz	6.40	4.30	20.0	12.30	10.0	1.0
DPI1210-3R3M	3.30	100 KHz	7.70	4.80	16.0	11.20	10.0	1.0
DPI1210-4R7M	4.70	100 KHz	10.0	6.55	15.0	10.0	10.0	0.9

Typical performance curves

